

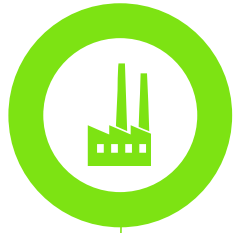


# AĞIRMAN

MAKİNA OTOMOTİV YAN SAN. Ve TİC. A.Ş.

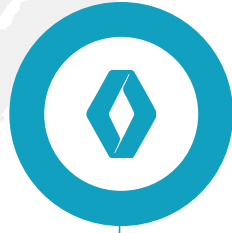
2025





**2000**

In 2000 the company obtained the QS 9000 certificate.



**2002**

In 2002 the company started export to France for the first time.



**2005**

In 2005 the company moved to a new facility in the Nilüfer Organized Industrial Site.

The company started produce for FIAT INDUSTRIAL SPA and FIAT POWERTRAIN TECHNOLOGIES SPA and export to Italy for the first time.



**1984**

In 1984 the company was founded.



**2001**

In 2001 the company started produce parts for RENAULT TÜRKİYE.



**2003**

In 2003 the company obtained the ISO/TS 16949 certificate.



**2007**

In 2007 the company obtained the ISO 14001 certificate.



**2014**

In 2014, GKN Driveline was added to our company portfolio.



**2022**

In 2022 We were honored with a quality improvement prize by GKN Driveline.



**2025**

AISIN was added to our company portfolio

**2010**

In 2010, SUMIRIKO HOSE was added to our company portfolio.

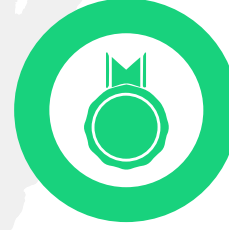
We were honored with a quality prize by TOFAŞ, the giant OEM of TÜRKİYE.



**2018**

In 2018 We were honored with a quality improvement prize by GKN Driveline.

The name of the company was renewed as AĞIRMAN MAKİNA OTOMOTİV YAN SAN. VE TİC AŞ.



**2023**

In 2023, Yazaki, Çelikel and Toksan were added to our company portfolio.



# AĞIRMAN

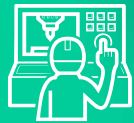
MAKİNA OTOMOTİV YAN SAN. Ve TİC. A.Ş.

**AĞIRMAN was founded in 1984  
by Mustafa Ağırman.**

It continues the journey in the sector of metal machining with giant OEMs of the automotive industry thanks to its experienced and qualified staff, quality assurance system, and specialty and skills...



Having a machine park for mass production, AĞIRMAN supplies the automotive parts requiring a specialty in manufacturing in desired quality, cost and time.



**The core of our business is**

- Turning,
- Milling,
- Grinding and
- Heat Treatment Processes



**Additionally we bring together the services of our expert sub-suppliers;**

- Coating cataphoresis, zinc, nickel plating, phosphate coating, polishing
- Heat treatment (vacuum heat treatment, cementation, carburizing, etc.)

# PRODUCTION & TECHNOLOGY



1- TURNING



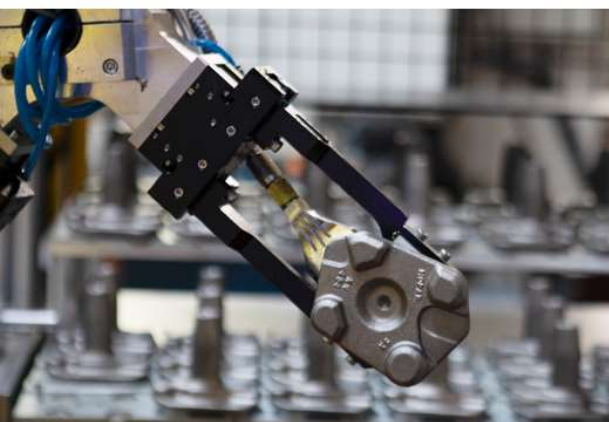
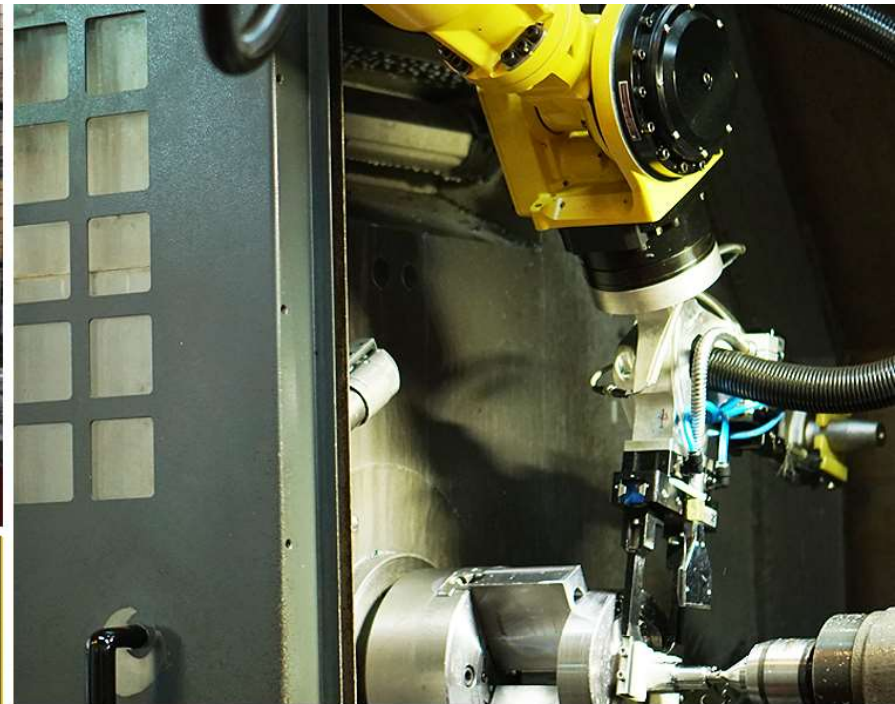
2- MILLING



3- GRINDING



4- HEAT TREATMENT

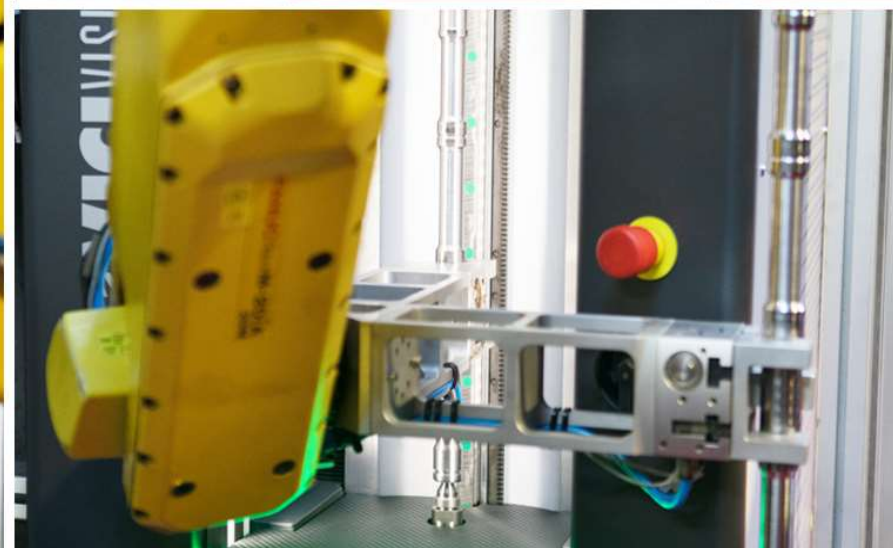
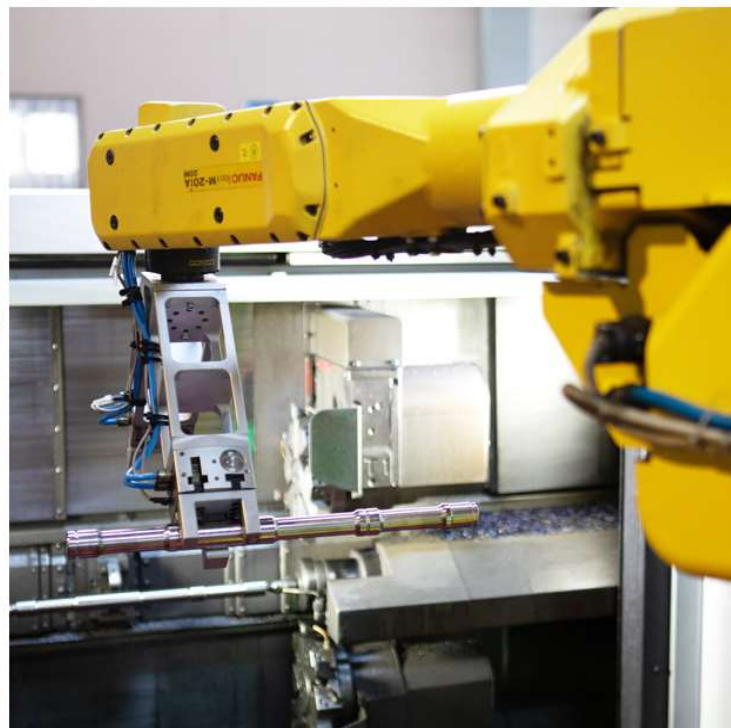
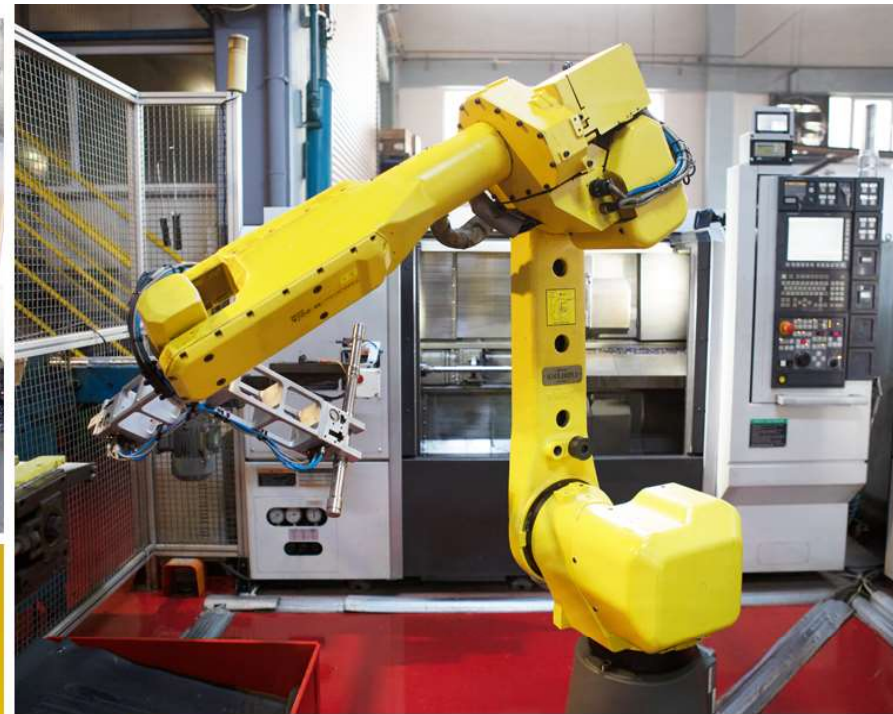


## **MACHINERY PARK**

Automation-oriented  
production systems to  
obtain process efficiency  
and production stability.



# TURNING



---

# PRODUCTION & TECHNOLOGY

PRODUCT SAMPLES



RENAULT  
GEAR SHAFTS

**ALL TURNING,  
DRILLING AND ANGLE  
MILLING WITH SINGLE  
OPERATION**



# **PRODUCTION & TECHNOLOGY**

PRODUCT SAMPLES

**FCA**

FIAT CHRYSLER AUTOMOBILES

REVERSE GEAR SHAFTS

**2X FASTER MACHINING  
WITH DOUBLE SPINDLE  
AND TURRET  
TECHNOLOGY**



# **PRODUCTION & TECHNOLOGY**

PRODUCT SAMPLES

**AKA**  
**WABCO**  
SPECIAL BUSHES

**MACHINING TO DELICATE  
POSITION (0,05 mm) AND  
DIAMETER TOLERANCES  
(0,02 mm)**



---

**PRODUCTION &  
TECHNOLOGY**  
PRODUCT SAMPLES



# PRODUCTION & TECHNOLOGY

PRODUCT SAMPLES



**TRUNK HINGE PARTS  
DIAMETER ANG LENGTH  
TOLERANCES (0,02 mm)  
SURFACE ROUGHNESS  
(Ra 0,6)**



---

# PRODUCTION & TECHNOLOGY

PRODUCT SAMPLES



**CABLE CHANNEL  
FIXATION  
ELEMENTS**



# PRODUCTION & TECHNOLOGY

PRODUCT SAMPLES



## ULTRASONIC WASHING

THE PRODUCED PARTS ARE WASHED IN THE ULTRASONIC WASHING UNIT AND THEN SHIPPED TO THE CUSTOMER.



SUMITOMO  
RIKO

AIR CONDITIONER  
ALUMINIUM VALVES

MEASUREMENT OF PARTS WITH  
OPTICAL MEASURING DEVICE  
( $\varnothing$ :1,5 $\mu$ m L:4 $\mu$ m)  
ULTRASONIC WASHING AFTER  
MACHINING



# PRODUCTION & TECHNOLOGY

PRODUCT SAMPLES



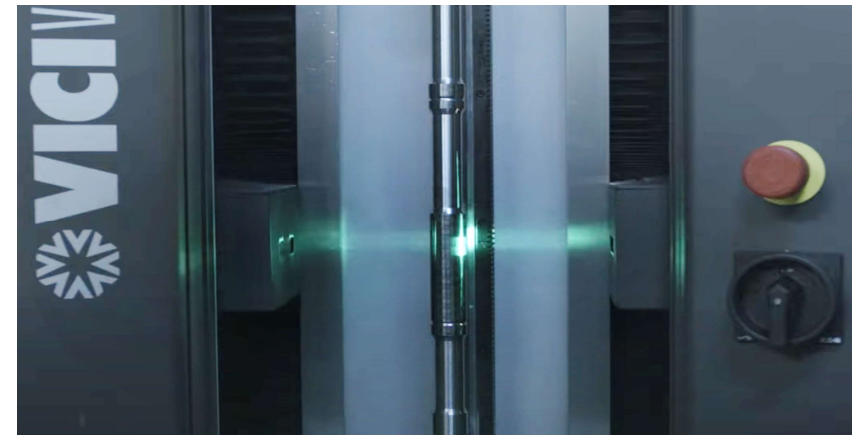
ROBOT AUTOMATED, %100 RUN-OUT AND  
DIMENSIONAL CONTROLS WITH OPTICAL  
MEASURINGDEVICE



- RUNOUT (0,03 mm)



- OUTER DIAMETER (0,02 mm)



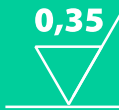
# PRODUCTION & TECHNOLOGY

PRODUCT SAMPLES

- HIGH SENSITIVITY SHAFT TURNING  
OF SAFETY PARTS.



- SURFACE ROUGHNESS (Ra 0.35)



- CYLINDRICITY (0,002 mm)



%100 CONTROL AND  
SPC TRACKING BY  
ROBOT/PLC

AUTOMATIC OFF-SET  
ACCORDING TO SPC  
DATA.



STELLANTIS  
**TOFAŞ**  
TÜRK OTOMOBİL FABRİKASI A.Ş.  
**FUSO**

# PRODUCTION & TECHNOLOGY

PRODUCT SAMPLES



- HIGH SENSITIVITY SHAFT TURNING  
OF SAFETY PARTS.



- RUNOUT (0,03 mm)



%100 CONTROL WITH OPTICAL MEASURING SYSTEM



# **MILLING**

Max. Machinable  
Part Size:  
**800x600x520mm**

## **Raw Materials We Process;**

- ALUMINIUM INJECTION / EXTRUSION PARTS
- FORGING STEEL PARTS
- CASTING STEEL PARTS



# PRODUCTION & TECHNOLOGY

PRODUCT SAMPLES

STELLANTIS

**TOFAŞ**

TÜRK OTOMOBİL FABRİKASI A.Ş.

FUSO

**ADDITIONAL 4TH  
AXIS WITH ROTARY  
TABLES.**



- HIGH SENSITIVITY MILLING OF  
SAFETY PARTS.



- HOLE POSITIONS (0,1 mm)



- HOLE DIAMETER (0,05 mm)



# PRODUCTION & TECHNOLOGY

PRODUCT SAMPLES

**TOFAŞ**

TÜRK OTOMOBİL FABRİKASI A.Ş.

STELLANTIS

FUSO  
DOUBLE PALLET  
TECHNOLOGY. MINIMIZE  
LOADING TIME AND  
PRODUCTIVE  
PRODUCTION



- HIGH SENSITIVITY MILLING OF  
SAFETY PARTS.



- HOLE POSITIONS (0,1 mm)



- HOLE DIAMETER (0,05 mm)



# PRODUCTION & TECHNOLOGY

PRODUCT SAMPLES

- HOLE DIAMETER (0,05 mm)



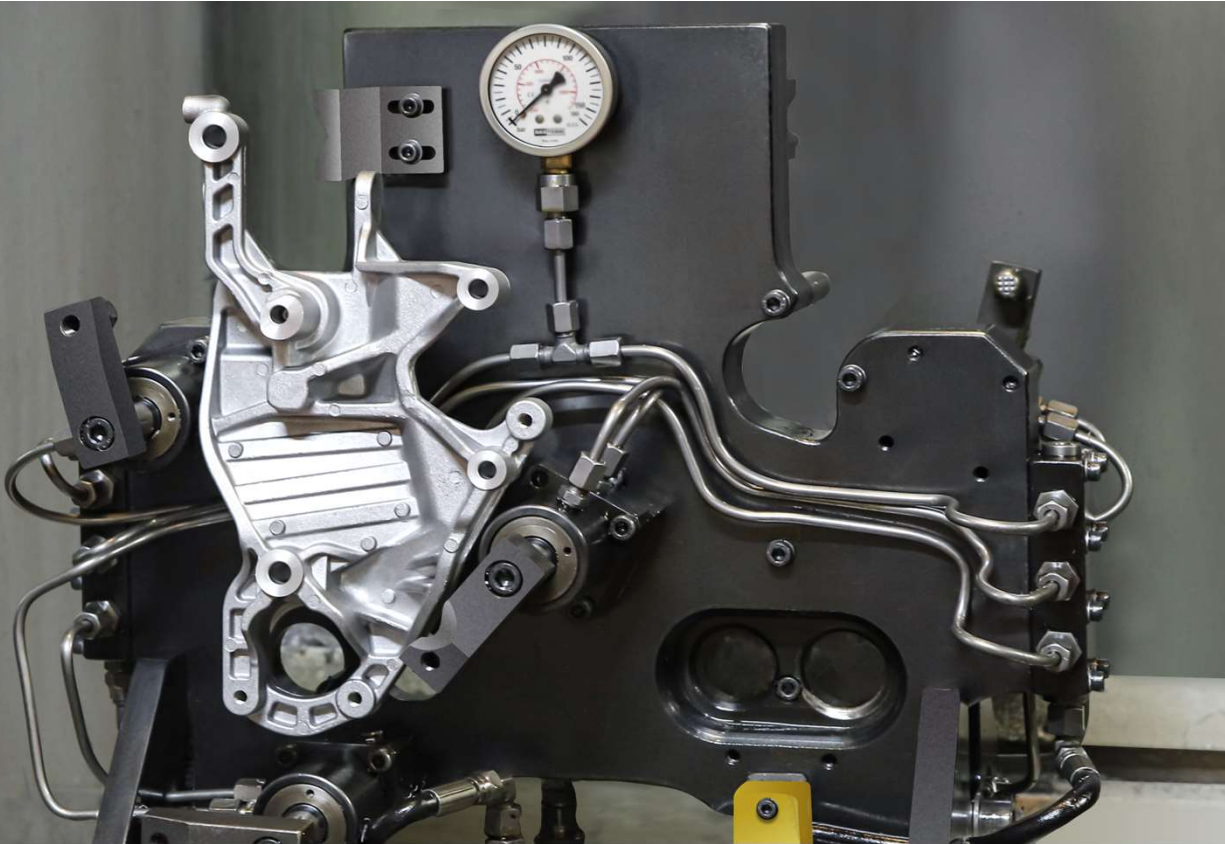
STELLANTIS

**TOFAŞ**

TÜRK OTOMOBİL FABRİKASI A.Ş.

**LATERAL LINK**





STELLANTIS  
**TOFAŞ**

TÜRK OTOMOBİL FABRİKASI A.Ş.

ALTERNATOR SUPPORT  
SPECIFIC MACHINING  
FIXTURE DESIGN.  
QUICK OPERATION TIME  
AND SET-UP.

## PRODUCTION & TECHNOLOGY

PRODUCT SAMPLES



# PRODUCTION & TECHNOLOGY

PRODUCT SAMPLES



EDU BRACKET

**SPECIFIC MACHINING  
FIXTURE DESIGN.  
QUICK OPERATION TIME  
AND SET-UP.**



# PRODUCTION & TECHNOLOGY

PRODUCT SAMPLES

STELLANTIS

**TOFAŞ**

TÜRK OTOMOBİL FABRİKASI A.Ş.

SUPPORT A/C COMPRESSOR

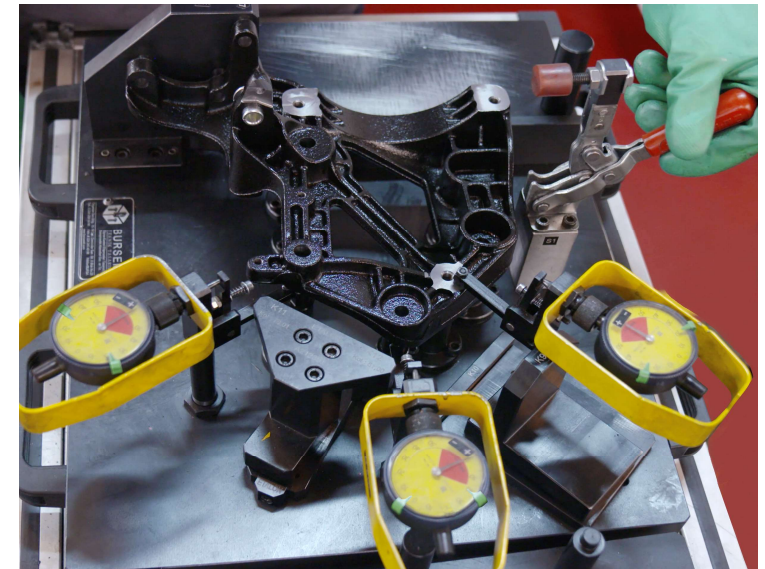
**SPECIFIC CONTROL APPARATUS.**



- HOLE DIAMETER (0,03 mm)



- HOLE POSITIONS (0,08 mm)



# PRODUCTION & TECHNOLOGY

PRODUCT SAMPLES

- CONE ANGLE ( $\pm 2' 34''$ )



---

# GRINDING






APPLIED TO MORE  
PRECISION SURFACE  
QUALITY AND TOLERANCES  
AFTER TURNING.



# GRINDING

- CNC GRINDING MACHINE.
- AUTOMATIC PART LOADING, GRINDING WHEEL DRESSING AND OFF-SETTING.
- GRADUAL GRINDING.

• Total Run – Out		0.015
• Circularity		0.005
• Straightness		0.005
• Surface Roughness	Ra	0,20
• Outer Diameter	Ø	5 µm



# HEAT TREATMENT



APPLIED TO INCREASE THE  
SURFACE AND CORE  
HARDNESS, STRENGTH  
VALUES OF THE PART.



# HEAT TREATMENT

INDUCTION  
HARDENING AND  
TEMPERING  
PROCESS.

SURFACE HARDNESS  
MEASUREMENT  
(0,1 HR ; 0,1 HB)

HARDNESS  
DEPTH  
MEASUREMENT  
(HV1-HV10)





# SUSTAINABILITY

Our responsibilities are  
our best rituals





## Sustainability

Our company's understanding of sustainability is based on a comprehensive approach that includes environmental, social and economic factors. While this approach influences the way we do business, it also reflects our social responsibilities and commitment to future generations.



## Environmental Responsibility

We constantly strive to minimize environmental impact at every step, from production to shipment of our products. We support environmental sustainability by making continuous improvements in areas such as recycling, energy efficiency and waste reduction. Additionally, we promote sustainability principles in our supply chain and support our business partners in this regard.

### ANNUAL SAVINGS



123 Tons Raw Materials



106,150 kWh Energy



10,915 kg Greenhouse Gas Emissions



312 m<sup>3</sup> Water



190 Trees



310 m<sup>3</sup> Waste Storage Space



## Social Contribution

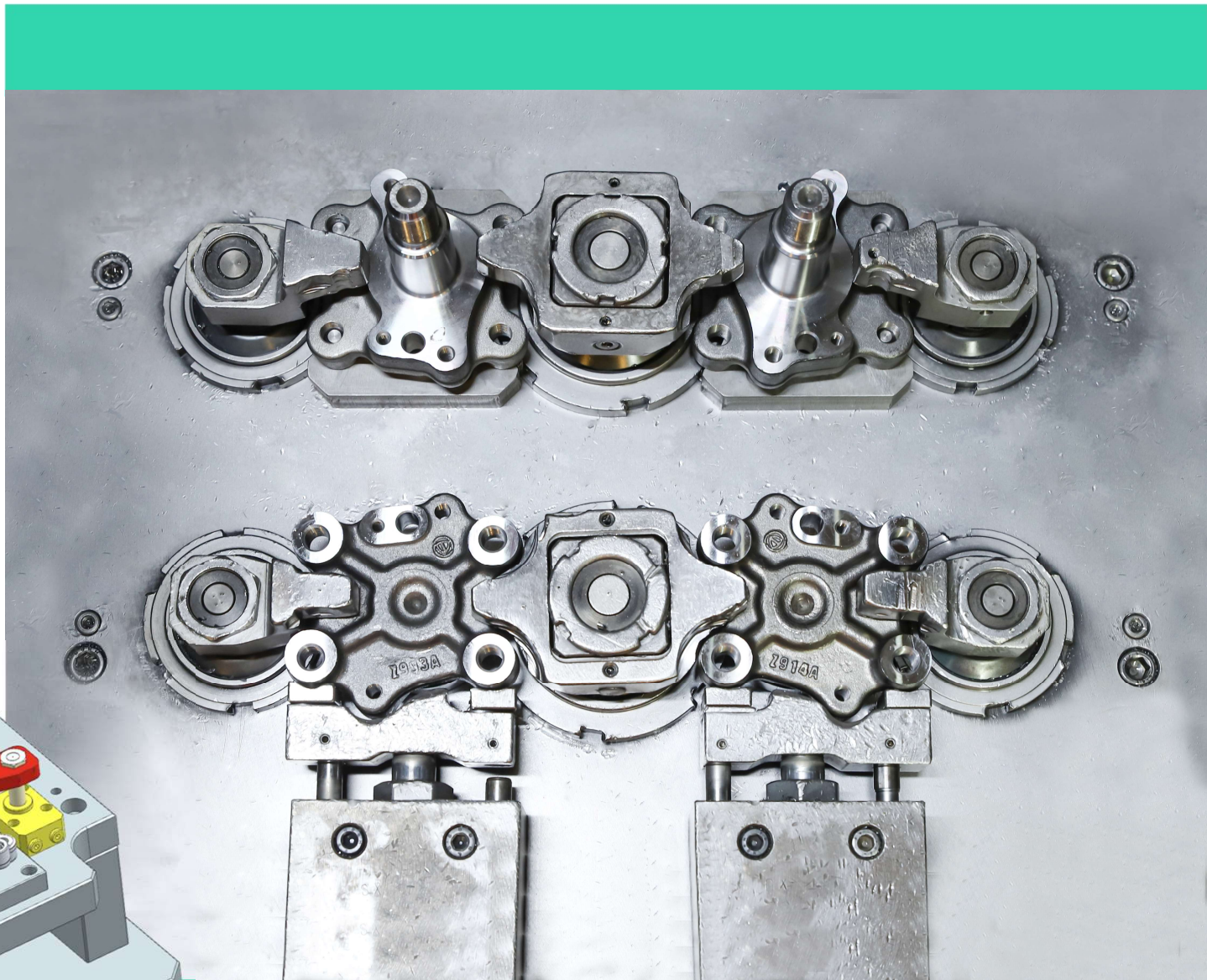
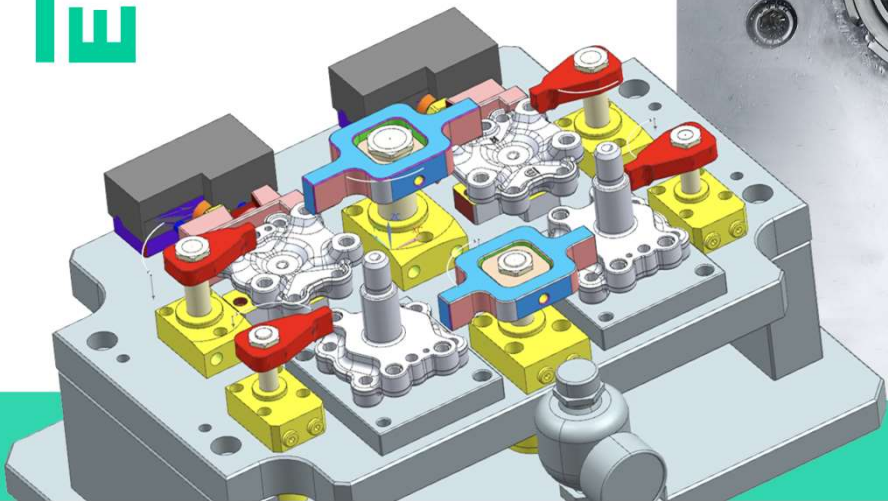
As part of our society, we invest in various social responsibility projects to improve the well-being of local communities. We aim to provide social benefit by supporting projects in the fields of education, health and social development. We also promote fair working conditions and support diversity in the workplace.



## Economic Sustainability

We base economic sustainability on long-term success. We focus on ensuring reliability and stability through transparent business practices. At the same time, we develop fair and mutually beneficial relationships with our business partners. We aim to create long-term value as well as economic growth.

# ENGINEERING





### CAD Modeling:

We enable the 3D modeling and design of parts. This includes creating, editing, or importing the geometry of parts.

### CAM Programming:

We program machining operations for CNC machines. This involves determining cutting paths, machining strategies, and tool paths.

### Simulation and Optimization:

We simulate and optimize programmed machining operations. This is used to detect possible collisions and minimize machining times.

### Tool and Process Efficiency:

We determine the most suitable tool selection, speeds, feeds, and machining conditions. This helps to increase machining efficiency and reduce costs.

### Job Tracking and Management:

We track, report and manage machining operations. This allows monitoring and optimizing production processes.

### Production Fixture Design:

We determine the most suitable equipment and materials and designing the fixture to operate at maximum efficiency.

### Process Design:

We,

Analyze the Workflow.

Establish Standard Operating Procedures.

Improve production by using faster equipment and technologies.

Improve inventory management.

Optimize quality control processes.

Balance the production flow.

Implement the principle of continuous improvement.



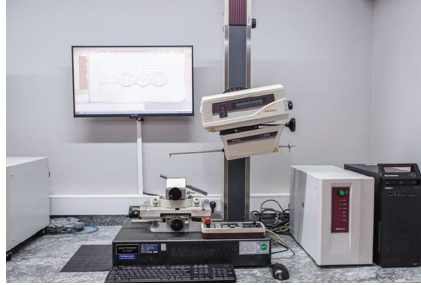


# CONTROL CAPABILITIES

All measuring devices  
have alternatives.



Mitutoyo 3D CMM  
( $\pm 0,0001$  mm)



Mitutoyo Contour Measurement  
( $\pm 0,0001$  mm)



Mahr Form Measurement  
( $\pm 0,0001$  mm)



Mitutoyo Form Measurement  
( $\pm 0,0001$  mm)



Vicivision Optical Measurement  
( $\pm 0,0001$  mm)



Affri Surface Hardness Tester  
( $\pm 0,1$  HRA,HRB,HRC,HB,HV)



Zwick Depth Hardness Tester  
( $\pm 0,1$  HV)



Mitutoyo Roughness Tester  
( $\pm 0,1$  Ra,Rz,Rt)

We implement the IATF 16949 Automotive Quality Management System and the ISO 14001 Environmental Management System standards.

---

# CERTIFICATES



# MEASUREMENT MANAGEMENT

WE MONITOR ALL MEASUREMENT  
PROGRESS ON ERP.

- WE DEFINE ALL MEASUREMENT CHARACTERISTICS BY PART NUMBER AND OPERATION.
- ALL MEASUREMENT RECORDS ARE ENTERED INTO THE ERP SYSTEM ACCORDING TO WORK ORDERS.
- MEASUREMENT PROGRESS IS MONITORED ON THE SCREENS IN THE LAB.
- ALL MEASUREMENT RECORDS ARE BACKED UP PERIODICALLY IN THE CLOUD-BASED SYSTEM AUTOMATICALLY.



İŞ İSTASYONU	MAKİNE DURUMU	İŞ MERKEZİ	PERSONEL	STOK	İŞ EMRİ	SON ÖLÇÜM SAATİ	SON ÖLÇÜM	TOPLAM ÇALIŞMA DİKİ	SONRAKİ ÖLÇÜM SAATİ	ÖLÇÜME KALAN SÜRE	DURUM
0108 0108 STAR CNC KAYAR 2	Çalışıyor...	10 BÖLÜM A (CNC KAYAR)	Ebubekir Saçan	15110004633-10 TOKSAN PIVOT PİM DAIMLER TORNALAMA	W- 88215	25.07.2024 07:02:00	KABUL	105 (dk)	25.07.2024 09:01:53	17 (dk) Kaldı.	...
0160 0160 TSUGAMI B0326E-II	Çalışıyor...	10 BÖLÜM A (CNC KAYAR)	Ebubekir Saçan	151.7145-0376-10 YAZAKI BURÇ OBLONG 9,2x15,2x11,5 TORNALAMA	W- 58788	25.07.2024 07:03:00	KABUL	104 (dk)	25.07.2024 09:02:35	18 (dk) Kaldı.	...
0136 0136 STAR SR 20J	Çalışıyor...	10 BÖLÜM A (CNC KAYAR)	Ebubekir Saçan	15110004635-10 TOKSAN PERNO PİM DAIMLER TORNALAMA	W- 86773	25.07.2024 07:22:00	KABUL	84 (dk)	25.07.2024 09:22:24	38 (dk) Kaldı.	...
0132 0132 TSUGAMI B0205E-II	Çalışıyor...	10 BÖLÜM A (CNC KAYAR)	Rahmi Tarım	7909-80107-10 Tahrikli Pompa Mili Tornalama	W- 00147	25.07.2024 07:59:00	KABUL	48 (dk)	25.07.2024 09:58:49	74 (dk) Kaldı.	...
0134 0134 TSUGAMI B0205E-II	Çalışıyor...	10 BÖLÜM A (CNC KAYAR)	Rahmi Tarım	SI09W0 Alüminyum Valf (VAL70)	W- 00164	25.07.2024 08:01:00	KABUL	46 (dk)	25.07.2024 10:01:14	77 (dk) Kaldı.	...
0163 0163 STAR CNC KAYAR SB-R20	Çalışıyor...	10 BÖLÜM A (CNC KAYAR)	Rahmi Tarım	9263305004 PUSHROD Ø16X88,6	W- 64026	25.07.2024 08:03:00	KABUL	43 (dk)	25.07.2024 10:02:41	78 (dk) Kaldı.	...
0135 0135 TSUGAMI B0326E-II	Çalışıyor...	10 BÖLÜM A (CNC KAYAR)	Mehmet Susatar	SM32S0 Alüminyum Valf160- VALHP0160-FORD	W- 91367			52 (dk)	25.07.2024 07:53:00	Süre DoImuş!	Ölçüm Gerekıyor!
TLP02 TLP02	Çalışıyor...	13 BÖLÜM B (FREZE+TORNA)	Güler Han	10511576-15 Barshaft RH (10511576) V769 - BOY TAMAMLAMA	W- 90498	25.07.2024 07:15:00	KABUL	108 (dk)	25.07.2024 09:14:58	31 (dk) Kaldı.	...

# CUSTOMERS KPI

Ağırman Makina is focussed on a customer experience and high level quality targets that exceed industry standards.



FIAT CHRYSLER AUTOMOBILES

IBP TARGET: MAX. 793  
PPM TARGET: MAX. 50  
AĞIRMAN SCORE: 0 IBP AND PPM



PPM TARGET: 0  
AĞIRMAN SCORE: 0



TOTAL SCORE TARGET : MIN %90  
AĞIRMAN SCORE: %100



PPM TARGET: MAKS. 10 PPM  
AĞIRMAN SCORE: 0



TÜRK OTOMOBİL FABRİKASI A.Ş.

IBP TARGET: MAX. 1888  
AĞIRMAN SCORE: 0



TOTAL ISSUES / YEAR : 3  
AĞIRMAN SCORE: 1



PPM TARGET: MAKS. 10 PPM  
AĞIRMAN SCORE: 0



PPM TARGET: MAKS. 10 PPM  
AĞIRMAN SCORE: 0



RENAULT

RANKING TARGET: 0  
PPM TARGET : MAKS. 3,74  
AĞIRMAN SCORE: 0 RANKING AND PPM



SUMITOMO  
RIKO

TOTAL SCORE TARGET : MIN. %90  
AĞIRMAN SCORE: %100



TOTAL SCORE TARGET : MIN. %90  
AĞIRMAN SCORE: %100



PPM TARGET: MAKS. 10 PPM  
AĞIRMAN SCORE: 0



# TRACEABILITY

## WITH THE IOT SYSTEM (RADIUS SYSTEM) INTEGRATED INTO ALL MACHINES;

- PRODUCTION PLANNING AND STOCK TRACKING
- DATA ENTRY AND MANAGEMENT WITH KIOSKS
- ONLINE PRODUCTION MONITORING WITH LIVE DATA STREAM FROM ALL MACHINES.
- INSTANT TRACKING TO OVERALL EQUIPMENT EFFICIENCY (OEE)
- INSTANT TRACKING SKILL MATRIX OF ALL EMPLOYEES

## MARKING:

- DATAMATRIX MARKING FOR INDIVIDUAL TRACEABILITY



# TOOL MANAGEMENT

WE MANAGE ALL TOOLS WITH HIGH-TECH PRODUCTS.

## AUTOMATIC MEASUREMENT SYSTEM OF TOOLS:

- MEASUREMENT OF TOOLS, WITH HIGH PRECISION CAMERA (X-Z AXIS)
- CUTTING TOOL WEAR ANALYSIS
- MOTORIZED PRECISION C AXIS (2  $\mu\text{m}$  SPINDLE RUNOUT)
- HIGH REPEATABILITY PRECISION ( $\pm 2 \mu\text{m}$ )
- TOOL MEASURING CAPACITY:  $\varnothing 400/700 \text{ mm}$
- DATA TRANSFER TO CNC WITH HQR-CONNECT AND HRFID-CONNECT

## AUTOMATIC TOOL STORAGE SYSTEM:

- PRODUCT BASED TOOL STORAGE AND TRACKING
- VERY FAST AND EASY ACCESS TO THE TOOLS
- MINIMUM STOCK LEVEL CONTROL (AUTOMATIC MAIL)
- HIGH SECURITY. ONLY AUTHORIZED PERSONS CAN TAKE THE TOOLS



# TRAINING PROGRAMS

We organize various training programs to enhance the quality of our workforce and develop our skills.



# TRAINING PROGRAMS

We organize various training programs to enhance the quality of our workforce and develop our skills.

## 1- Automotive Core Tools

- Advanced Product Quality Planning (APQP)
- Production Parts Approval Process (PPAP)
- Measurement System Analysis (MSA)
- Statistical Process Control (SPC)
- VDA AIAG Process Failure Mode Effect Analysis (PFMEA)

## 2- Problem Solving and Continuous Improvement

- Standart Kaizen
- Major Kaizen
- Eight Disciplines of Problem Solving (8D)
- A3 Problem Solving

## 3- Quality Management Standarts

- IATF 16949 Automotive Quality Management System
- IATF 16949 Automotive Quality Management System - Internal Auditor

## 4- Environmental Management Systems

- ISO 14001 Environmental Management Systems
- ISO 14001 Environmental Management Systems – Internal Auditor

## 5- Special Process Assessments (CQI)

- CQI-8 : Layered Process Audit
- CQI-9 : Heat Treatment Assessment

## 6- Orientation Trainings

- Organization
- Awareness and Control of Suspicious Products
- Occupational Safety and Worker Health,
- Emergency Situations
- Machinery, Product Information and Work Management
- Operating Machinery
- Daily Maintenance
- Tool Management
- Material/Parts Management, Traceability
- Geometric Dimensioning and Tolerancing
- Technical Drawing
- Work Instructions
- Calibration and Measurement Uncertainty
- Measuring Devices
- Poka-Yoke
- Scrap Management
- 5S

OUR CUSTOMERS



STELLANTIS



Jeep

FCA

FIAT CHRYSLER AUTOMOBILES

TOFAŞ

TÜRK OTOMOBİL FABRİKASI A.Ş.

Stackpole  
International

YAZAKI

Çelikel®

KANCA  
DESIGN • FORGE • SAFETY

AISIN



SUMITOMO  
RIKO

AKA

EX METAL

TOKSAN  
OTOMOTIV



RENAULT

## SALES

**Phone** : + 90 224 411 22 70  
**Fax** : + 90 224 411 22 77  
**E-mail** : [sales@agirmanmakina.com](mailto:sales@agirmanmakina.com)

## COMMUNICATION



Nilüfer Organize Sanayi Bölgesi 116.  
Sok. No:2 16140 Nilüfer / BURSA



+90 (224) 411 22 70



+90 (224) 411 22 77



[info@agirmanmakina.com](mailto:info@agirmanmakina.com)



40.243797,28.931165



AGIRMAN



[www.agirmanmakina.com](http://www.agirmanmakina.com)